

\$425,000 - 00 Shore Drive, Williamsburg

MLS® #1881184

\$425,000

Bedroom, Bathroom,
Vacant Lot/Land on 1 Acres

Clearwater Point, Williamsburg, Michigan

FABULOUS ELK LAKE. Build your home on this lot with 140' of frontage. Very private setting in an area of beautiful homes. Close to all Elk Rapids amenities. Enjoy the chain of lakes from this sunrise side lot.

Essential Information

MLS® #	1881184
Price	\$425,000
Acres	1.20
Type	Vacant Lot/Land
Sub-Type	Vacant Lot/Land, Private Water Frontage
Status	Active

Community Information

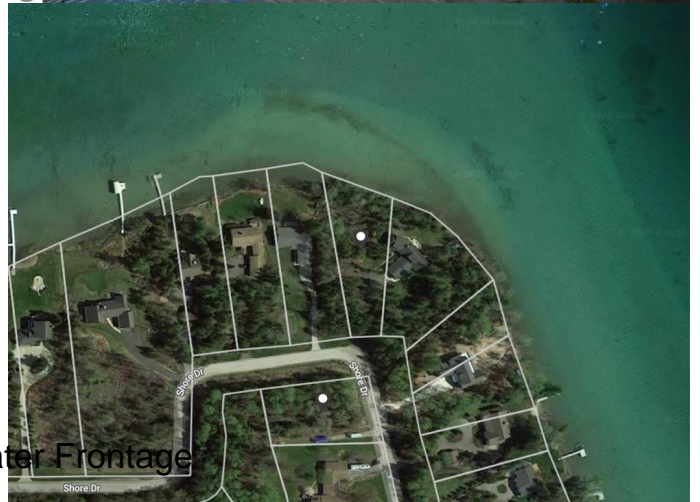
Address	00 Shore Drive
Subdivision	Clearwater Point
City	Williamsburg
County	Antrim
State	Michigan
Zip Code	49690

Amenities

Utilities	WATER: None SEWER: None
Is Waterfront	Yes
Waterfront	Inland Lake, Water View, All Sports, Priv Frontage (Wtr Side)

Exterior

Exterior Features	Bay View
-------------------	----------



Lot Description Irregular, Level, Wooded

School Information

District Elk Rapids Schools

Additional Information

Date Listed October 20th, 2020

Days on Market 136

Zoning Platted Subdivision

Listing Details

Listing Office RE/MAX Of Elk Rapids

Listing Office Phone 231-264-5400

The accuracy of all information, regardless of source, is not guaranteed or warranted. All information should be independently verified. Copyright © Northern Great Lakes REALTORS® MLS. All Rights Reserved.